

Remote Desktop Tutorial

By: Virginia "Ginny" Morris



2008

Scope:

The following manual should accompany my Remote Desktop Tutorial video posted on my website <http://www.ginnymorris.com> and on [You Tube](#). Users with little to moderate knowledge of computers should be able to use this tutorial. The tutorial details how to set up a computer to accept a remote desktop connection and how to connect to that computer using the remote desktop connection on another computer. It is important to note that the computer you will be connecting to must have Windows XP Professional, Windows Vista Business or Windows Vista Ultimate. The computer you will be connecting from can have any of these versions or a home version of Windows. This tutorial shows how to use remote desktop over your home network. I do not show you how to use remote desktop to connect to a machine that is not connected to your home network.

You may ask, why would I need to connect to another computer in my own home? Well, you can maintain all of your home computers from one location instead of running around to all of those computers. You can monitor your network activity, including your children's computers. If you have only one license for a program, you can access that program by using remote desktop to access the computer with the program installed. Whatever the application of use, Remote Desktop is explained here.

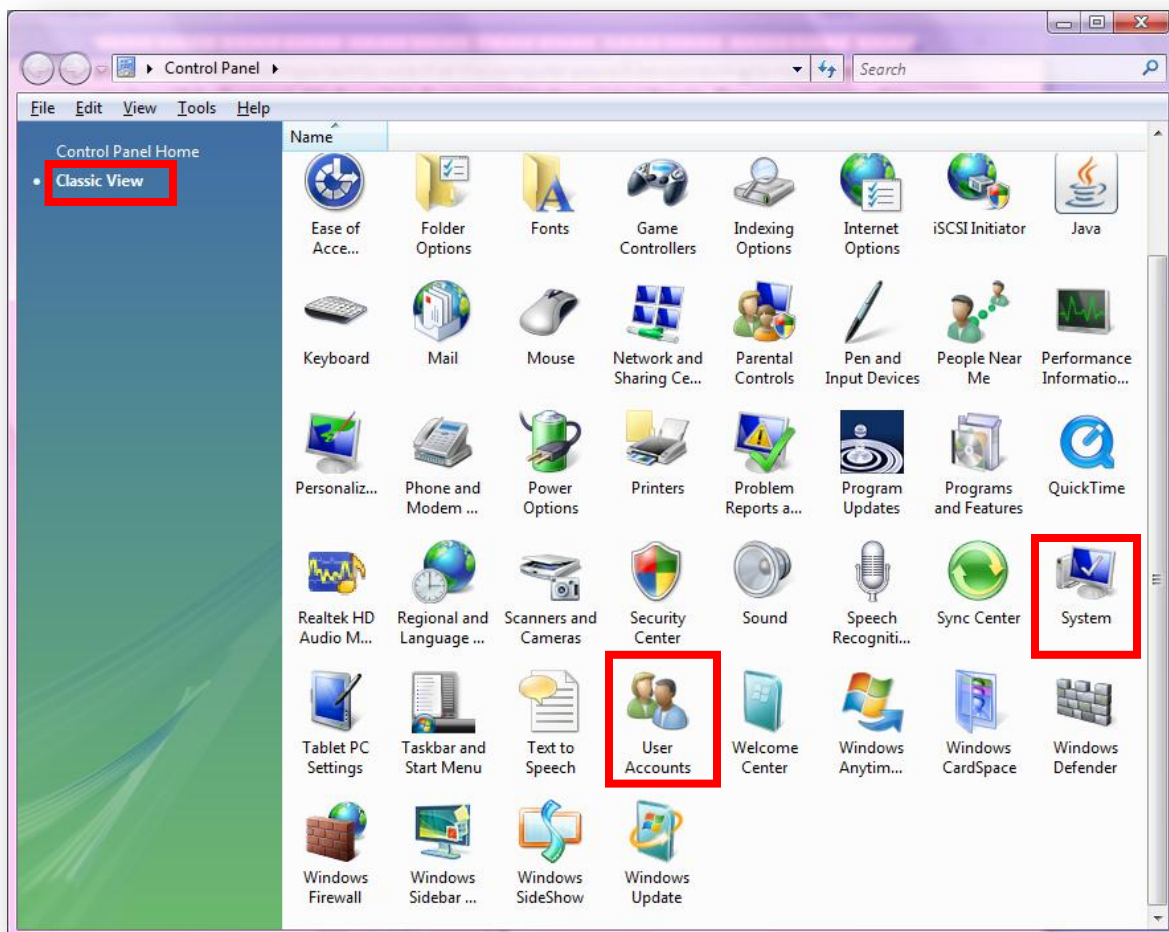
Required Equipment:

- One computer with one of the following operating systems
 - Windows XP Professional
 - Windows Vista Business
 - Windows Vista Ultimate
- A second computer with any of the following operating systems
 - Windows XP Home
 - Windows XP Professional
 - Windows Vista Home Basic
 - Windows Vista Home Premium
 - Windows Vista Business
 - Windows Vista Ultimate
- Wired or Wireless Router – Both computers must be connected wirelessly or wired to this router

Section 1: Setting up the computer you will be connecting to

Before you can connect to a computer using remote desktop, you must make some changes to that computer's set-up. You must have a user account with a password on that computer, and you must tell that computer that it can accept remote connections. You also need to know the IP address of the computer you will be connecting to.

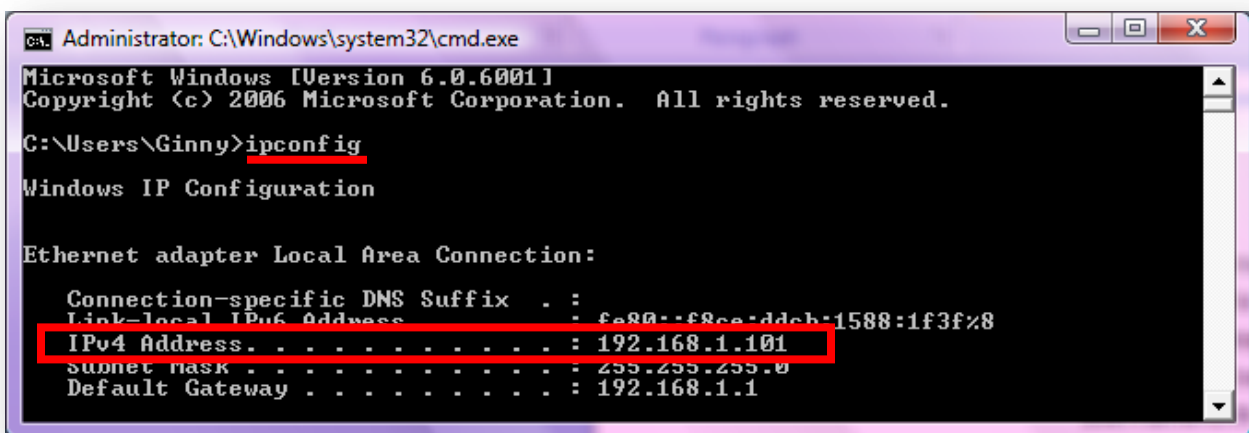
Step 1: The Control Panel



1. Open the control panel by going to the start menu and clicking "Control Panel" or click the Computer icon and click "Control Panel"
2. Select "Classic View" in the top left hand corner of the control panel
3. Select "User Accounts".

- a. If you are logged in to the account you will be using to remote in to the machine, select "Create a password for this account"
 - b. If you do not have an account on the machine, select "Manage User Accounts" then "Create an Account". Follow the prompts to create an account and password.
4. Go back to the control panel and select "System". Within this screen, you can tell what version of windows you are using. Vista users should select "Advanced System Settings". If the UAC (User Account Control) asks if you would like to proceed, select yes.
- a. Select the "remote" tab
 - b. Select the option that allows computers to connect to your computer through remote desktop
 - c. Click "Select Users". If your user account is not listed, click add and add your user name to the list.
 - d. Press OK until you are back to the control panel and close the control Panel

Step 2: Command Prompt



```
Administrator: C:\Windows\system32\cmd.exe
Microsoft Windows [Version 6.0.6001]
Copyright (c) 2006 Microsoft Corporation. All rights reserved.

C:\Users\Ginny>ipconfig

Windows IP Configuration

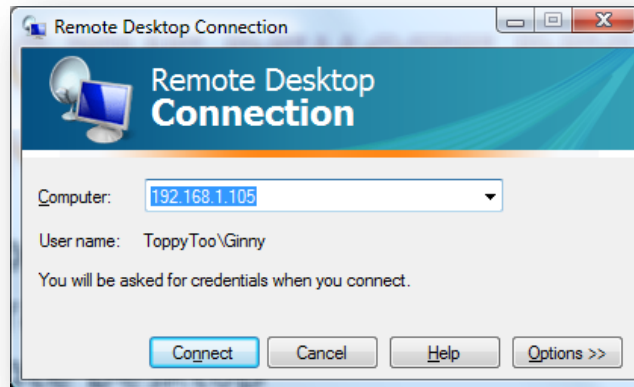
Ethernet adapter Local Area Connection:

    Connection-specific DNS Suffix  . : 
    Link-local IPv6 Address . . . . . : fe80::f8ce-ddcb-1588:1f3f%8
    IPv4 Address. . . . . : 192.168.1.101
    Subnet Mask . . . . . : 255.255.255.0
    Default Gateway . . . . . : 192.168.1.1
```

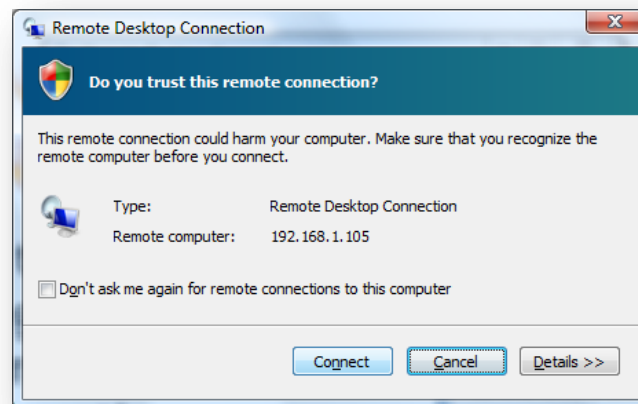
1. Go to the Start Menu, Select Run, Type cmd and press enter
2. In the command prompt window, type "ipconfig" (without quotations) and press enter.
3. Scroll up until you find the "IPv4 Address"
4. Write down the address and close the window.
5. Log out of the computer but do not turn it off.

Section 2: Using Remote Desktop

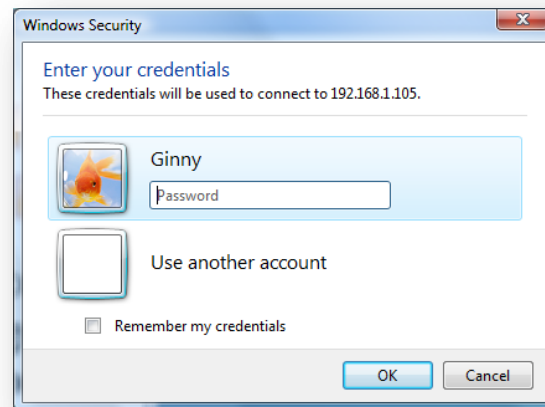
Step 1: Remote Desktop Application



1. Go to the Start Menu, Select All Programs, Select Accessories, then Select Remote Desktop Connection
2. Type the IP Address that you wrote down earlier into the dialogue box. Press enter.
3. You may be asked if you trust the remote connection, select yes or connect.



4. Type in the user name and password you set up on the other computer and press enter



5. You should now be logged in to the other computer remotely. You can use this machine just as you would your local desktop.
6. To exit, either press the X at the top of the window or go the start menu and select log off.

Section 3: Remote Desktop Additional Options (optional)

- Display: Gives the user the option of opening the remote desktop window in full screen mode or on a portion of your desktop. Users can also select color options.
- Local Resources: Allows users to mount local printers, the clipboard, local drives, USB and plug and play devices to the remote computer. This is useful because you can share files between the computers, copy and paste between the computers, and print from the remote computer.
- Programs: Allows a user to open a program upon login to the remote machine.
- Experience: Gives the user different options based on their connection speed. Since remote desktop works over your network connection, the more options you select, the slower remote desktop can potentially be.
- Advanced: Gives options for server authentication and Connect from Anywhere. I do not suggest using these options unless you are a more advanced user.

